

Class B CDL Pre-Trip Inspection Straight Truck

The purpose of this inspection is to make sure the vehicle is safe to operate, and to see if you have the knowledge and skills to inspect your vehicle.

You may have to walk around the vehicle and point to or touch each item and explain to the examiner what you are checking and why. You will not have to crawl under the hood or under the vehicle.

FRONT OF THE TRUCK

Marker Lights:

(Five lights on a top of the truck)

- Proper color
- Working
- Not broken
- Not cracked

Windshield:

- Clean
- Not broken
- Not cracked

Windshield Wipers:

- In good condition
- Working properly

Hood:

- Not damaged
- Not broken
- In good condition
- Securely locked

Grill:

- Must be present
- Stably mounted
- Not broken
- In good condition
- Clean

Head lights:

- Must be clear
- Not broken
- Not damaged
- In good condition.
- Working properly

Turn Signals:

(Two functions – turn signal and emergency flasher)

- Must be clear
- Color must be amber or orange
- Not damaged
- In good condition.
- Working properly

Bumper:

- In good condition
- Well mounted to the frame
- No missing parts

Registration Plate:

- Must be well tight to the bumper
- Clean and visible
- Sticker must be valid.



Leaks:

(The leaks can be two kinds: **Oil** – from transmission and engine and **Fluids** – from power steering system and cooling system – antifreeze leaks)

- Look for puddles on the ground
- Look for dripping fluids on underside of engine and transmission
- Must be no leaks.

SIDE OF THE TRUCK

Front Wheels:

Tires

- Do not use recap
- No any bubbles
- No any cuts on it
- No any space between rims and tires.
- Air pressure must be 80-100 PSI
- In the front tire's dept of tread must be four thirty seconds of inch ($4/32''$)

Rim

- Not bent
- Not cracked
- No welding repairs

Lug Nuts

- None are missing
- Tight – no shinny threads, or rust trails

Outer Hub Oil Seal

- Not leaking
- No missing bolts
- Proper oil level

Valve stem

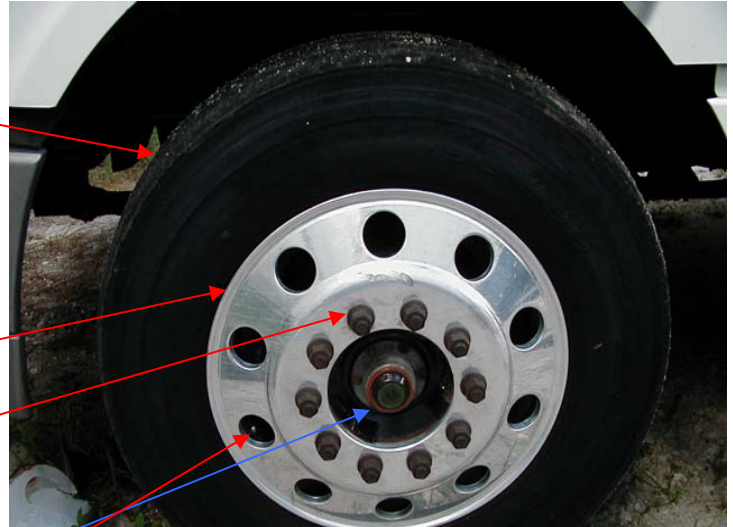
- No cuts
- No damages
- No missing.

Mirrors:

- Must be clean
- Not broken
- Adjustable from inside.
- Mirrors brackets must be well mounted to the door

Doors:

- Door latch in a good condition
- Grab handles secured
- The doors may be opened and closed easily
- Window must be clean, not broken without cracks and in good condition.



Steps:

- Must be not broken
- Clean
- Free of oil, grease, snow and ice

Fuel tank:

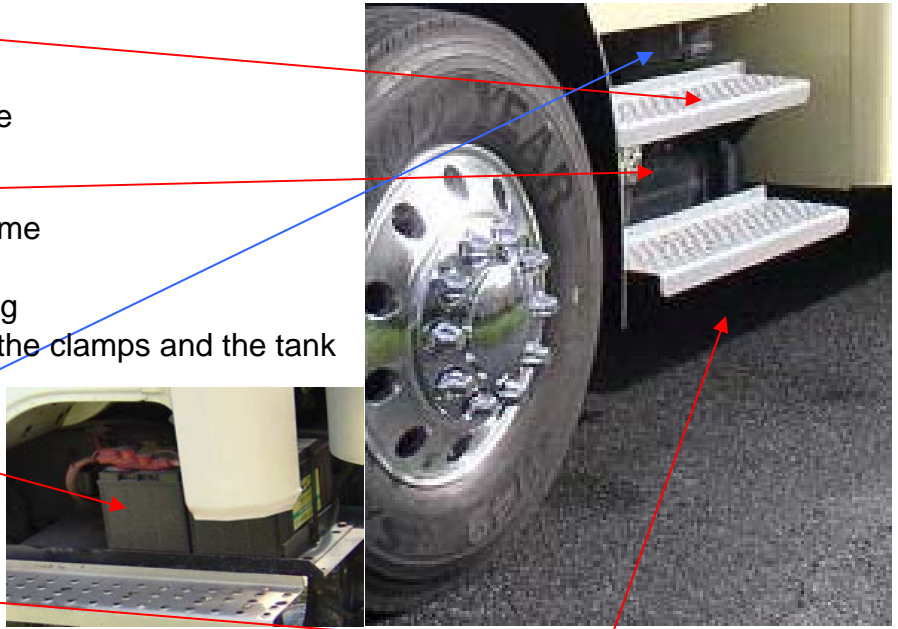
- Must be well mounted to the frame
- No leaks on fuel tank
- Cap must be locked while driving
- There must be rubber between the clamps and the tank

Battery:

- No leaks from battery
- No corrosion on the terminals

Under Vehicle:

- No leaks
- No low hanging wires



ENGINE COMPARTMENT - DRIVER SIDE

Radiator:

- Radiator cap – closed, no sign of leak
- Check antifreeze for level and condition
- Hoses attached, not cracked and not leaking

Air Compressor:

- Mounted Securely
- No missing bolts or parts
- No air leaks at lines

Compressor *Belt*

- No more than 3/4 inch of play
- Not cracked or frayed

Power Steering Reservoir:

- Mounted properly
- Hoses attached and not leaking
- Check for level and condition

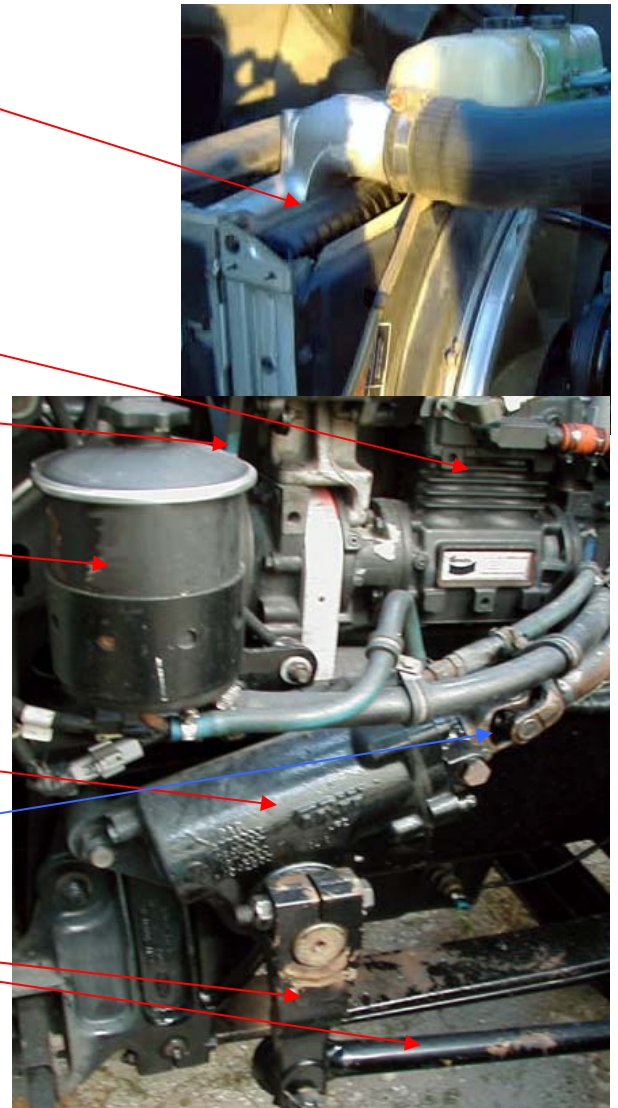
Steering Gear Box:

- Mounted properly
- No missing parts, nuts or bolts
- Lines and hoses not leaking or broken

Steering Linkage:

*Pitman arm, Drag link,
Steering Column, Steering knuckle*

- Not cracked, bent or broken
- Castle nuts and cotter pins
- Not missing and in place



ENGINE COMPARTMENT - PASSENGER SIDE

Water Pump:

- Mounted Securely
- No missing bolts or parts
- Hoses attached securely
- No leaking hoses or water pump

Belts

- No more than $\frac{3}{4}$ inch of play
- Not cracked, frayed, or damaged

Alternator:

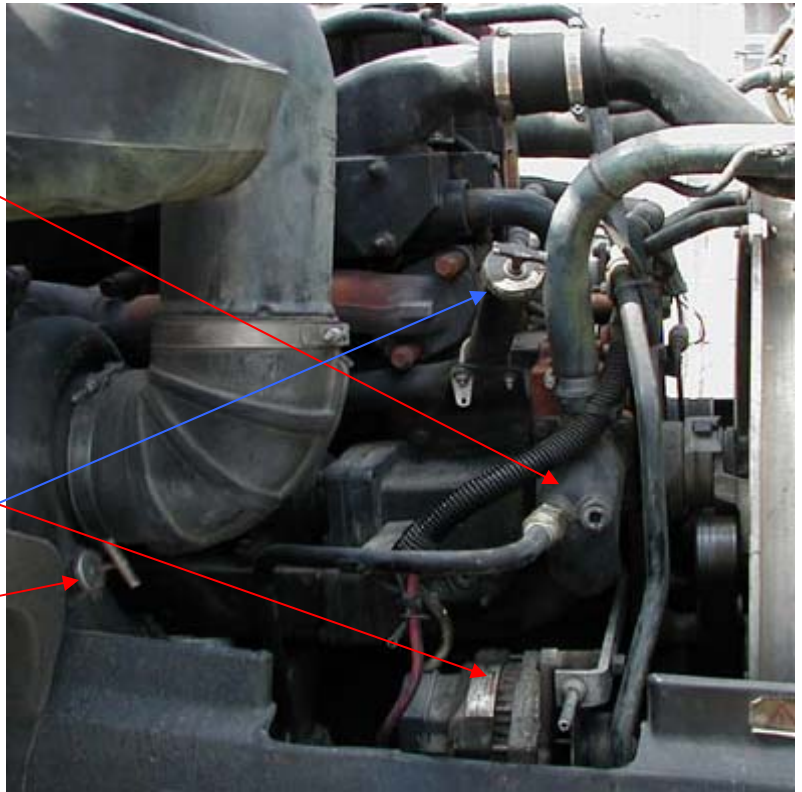
- Mounted Securely
- No missing bolts or parts
- Wires good connections, not frayed

Belts

- No more than $\frac{3}{4}$ inch of play
- Not cracked, frayed, or damaged

Oil Level:

- Check the level and condition with the deep stick



Hoses and Wiring:

- Not cracked, frayed, or broken
- Belts no more than $\frac{3}{4}$ inch of play
- Hoses not leaking

FRONT SUSPENSION

Shock Absorber:

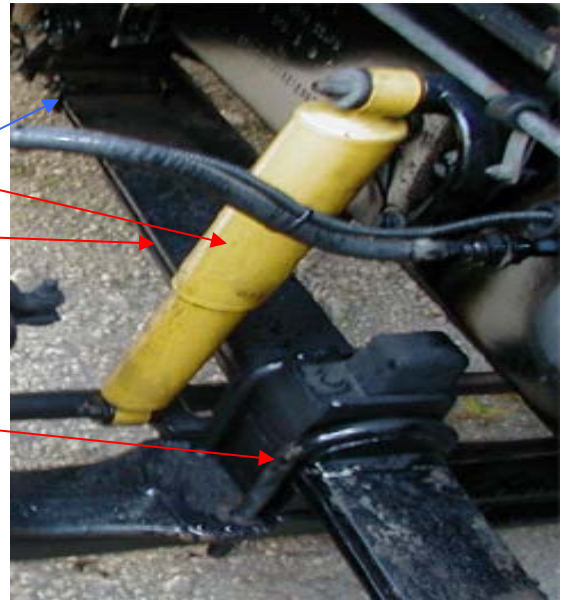
- Mounted Securely
- Not bent or dented
- Not leaking

Leaf Springs:

- Not shifted or out of place
- Not cracked, broken or missing

Spring Mounts:

- Mounted securely - front, back, and U-bolts
- Not cracked or broken



FRONT BRAKES

Hoses and Lines:

- Mounted securely
- Not leaking
- Not cracked or frayed

Chamber:

- Mounted securely
- Not dented or damaged
- Not leaking

Slack Adjuster:

- No more than 1 inch of free play at the push rod with the brakes released
- Not bent, broken, loose, or missing parts

Drums:

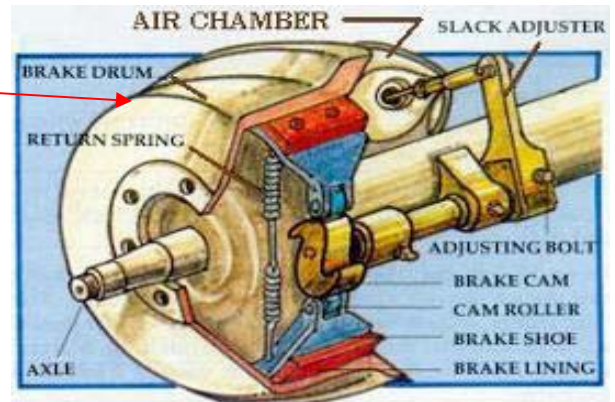
- Not cracked, broken or dented
- No oil leaking from inner oil seal, free of debris

Linings:

- No cracked, broken or missing parts
- Not less than ¼ inch in thickness

Drive Shaft:

- Not bent, or damaged
- Coupling, U-joints appear secure



Frame:

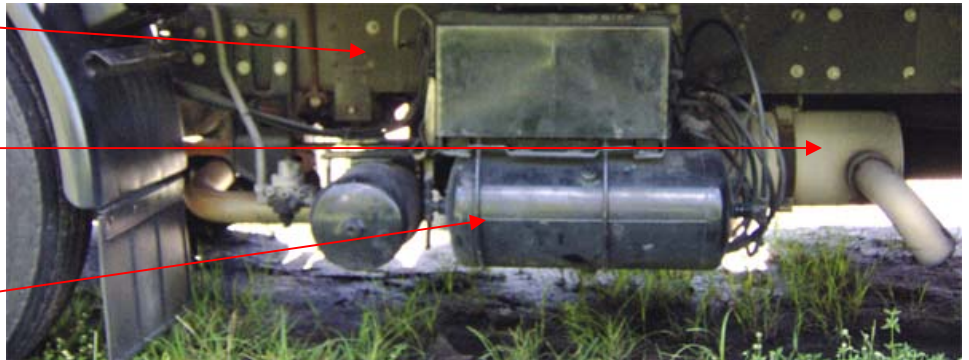
- Not cracked, or damaged
- No illegal welds

Exhaust System:

- Securely mounted
- Not dented or damaged
- Not leaking

Air Tanks:

- Securely mounted
- Not damaged
- Not leaking



REAR (DRIVE) WHEELS

Tires:

- Can be recap (We must be sure that no any separation between recap and original tire.)
- No any bubbles
- No any cuts on it
- No any space between rims and tires.
- Air pressure must be 80 - 100 PSI
- In the front tire's dept of tread must be four thirty seconds of inch (2/32")
- No any objects between wheels, no any stone, no any bottle.

Lug Nuts:

- None are missing
- Tight – no shiny threads, or rust trails

Rim:

- Not bent
- Not cracked
- No welding repairs

Outer Hub Oil Seal:

- Not leaking
- No missing bolts
- Proper oil level

Valve stem:

- No cuts
- No damages
- No missing.

Space:

- Check for objects between wheels
- Check for proper spacing

Splash Guards:

- Not missing or torn and properly mounted



DRIVE AXLE SUSPENSION

Control Arm Mount:

- Mounted securely
- Not bent, broken or damaged

Control Arm:

- Mounted securely
- Not cracked, or broken

Shock Absorber:

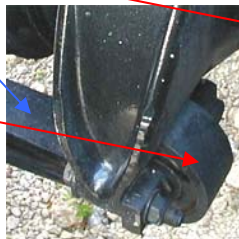
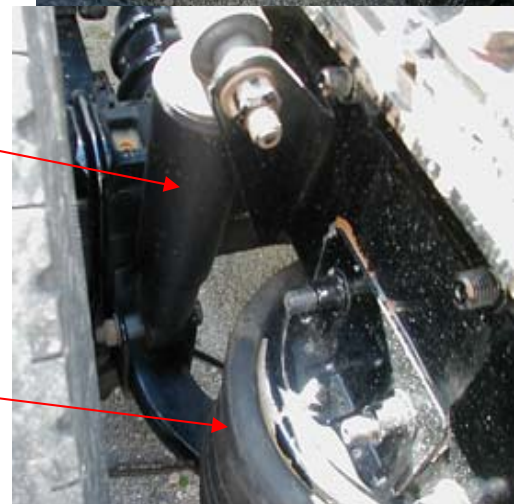
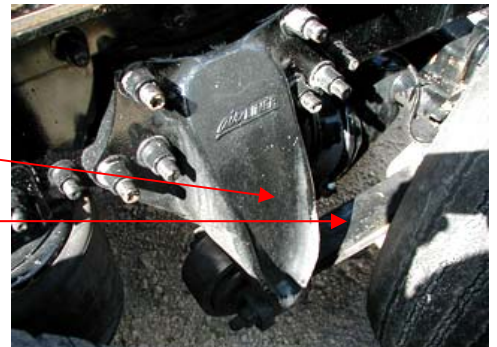
- Mounted Securely
- Not bent, dented or leaking

Torsion Bar:

- Mounted Securely
- Not bent, broken or damaged

Air Bags (If equipped):

- Mounted Securely
- Not leaking



DRIVE BRAKES

Hoses and Lines:

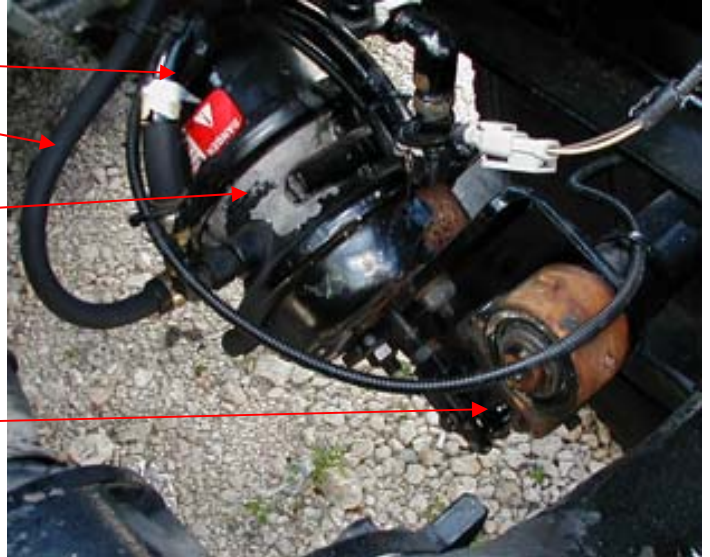
- Mounted securely
- Not leaking
- Not cracked or frayed

Chamber:

- Mounted securely
- Not dented or damaged
- Not leaking

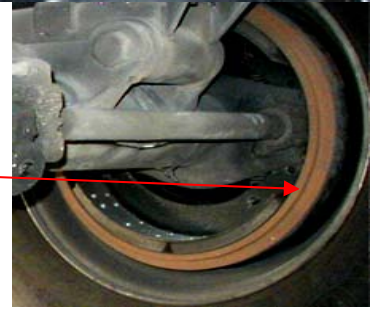
Slack Adjuster:

- No more than 1 inch of free play at the push rod with the brakes released
- Not bent, broken, loose, or missing parts



Drums:

- Not cracked, broken or dented
- No oil leaking from inner oil seal, free of debris



Do the same check on the passenger side.

REAR OF THE TRUCK

Doors:

- Not bent, broken, or damaged
- Close and latch securely
- Hinges secure, no damage

Splash Guards:

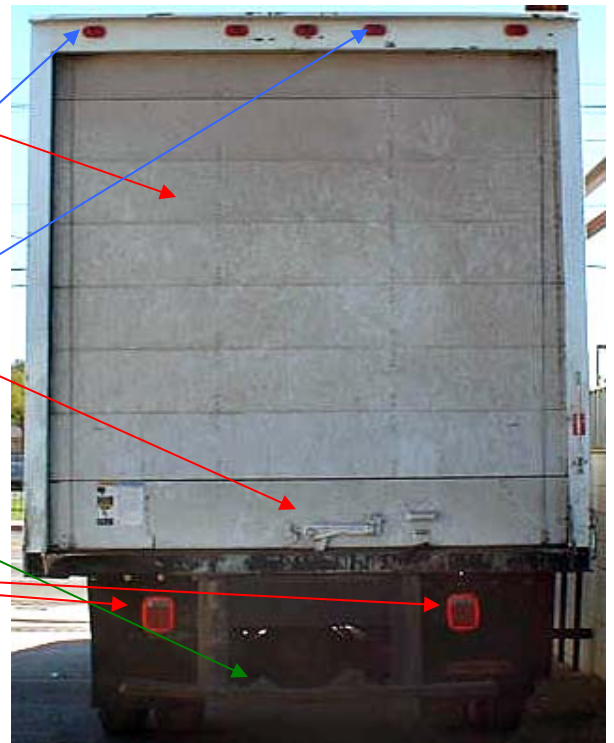
- Mounted properly
- Not missing, ripped or torn

Dot Bumper:

- Not bent or damaged

Lights & Reflectors:

- Working and proper color
- Not broken, cracked, or missing



IN CAB INSPECTION

Emergency Equipment:

- Spare minimum three electrical fuses (unless vehicle has circuit breaker)
- *Three reflective triangles*
 - Must be red and in good condition
- *Fire extinguisher*
 - Must be ABC or BC type
 - Fully charged
 - Safety pin must be present
 - Sticker must be valid
 - Securely mounted



Safety Belt:

- Latches securely
- Mounted securely

Steering Wheel:

- No more than 10 degrees or 2 inches of free play

Clutch pedal (If equipped):

- Engages and disengages smoothly
- Free play maximum 1.5 inch
- Rubbered

Foot (Service) brake:

- No stick to the floor
- Rubbered

Accelerator:

- No stick to the floor

Shifter:

- Moves in and out of gear properly
- Range selector works

Water Temp Gauge:

- Gauge is working (170 – 210 degrees)

Oil Pressure Gauge (If equipped):

- Gauge is working properly
- Normal oil pressure (20 - 45 PSI)
- Check that the warning light goes out

Ammeter/voltmeter (If equipped):

- Gauge shows 12 – 14 volts



Lighting Indicators:

- Left and right turn signal
- 4-Way Flashers
- High beam indicator

Horns:

- Electric (Street) horn works properly
- Air horn works properly (If equipped)
- Min one must be working

Heater & Defroster:

- Move switch from heat to defrost
- Check for air flow



Windshield:

- Clean and free of obstruction
- Not cracked or broken

Wipers & Washer:

- Working
- Mounted securely to wiper arm
- Rubber not torn
- Washer sprays properly



Mirrors:

- Clean
- Adjusted

CHECK SERVICE, EMERGENCY AND PARKING BRAKES

Air leak test (static)

1. Air pressure must be maximum (120-130psi)
2. Transmission: 1st gear
3. Turn engine OFF
4. Release parking brakes (yellow knob IN)
5. Do not touch break pedal, wait one minute, check air pressure loss is no more then **2 PSI**



Air leak test (applied)

1. Air pressure must be minimum of 90psi
2. Transmission: 1st gear
3. Engine is OFF
4. Parking brakes released (yellow knob IN)
5. Depress and hold break pedal one minute air leakage must be not more then **3 PSI**



Low pressure warning device test

1. Air pressure must be maximum (120-130 PSI)
2. Transmission: 1st gear
3. Engine is OFF, ignition is ON
4. Release parking brakes (yellow knob IN)
5. Pump brake pedal, release (fan down)

Buzzer + Red light on by 60 PSI



Spring brake pop-out test

1. Air pressure must be minimum 60 PSI
2. Transmission: 1st gear
3. Engine is OFF
4. Parking brakes released (yellow knob IN)
 - Pump brake pedal (fan DOWN)
 - Parking brakes (yellow) knob must pop-out between 20-40 PSI



Slack adjuster check

1. Park on level ground.
2. Apply parking brakes.
3. Put transmission on first gear.
4. Turn engine OFF and put key in the pocket.
5. Block the wheels (place chock)
6. Release parking brakes.
7. Check free play on slack adjuster manually.

If it is more than 1 inch, then must be adjusted.